

vertical

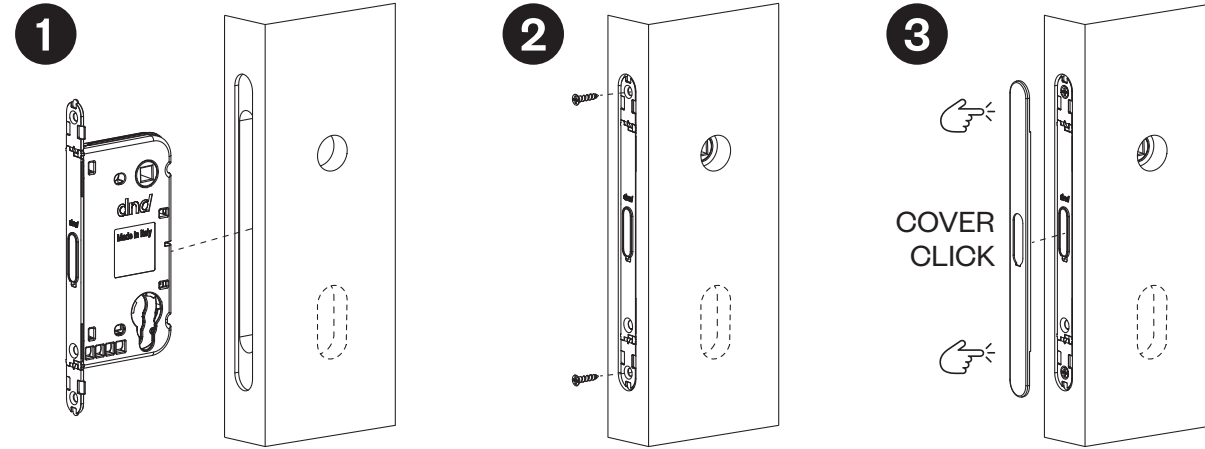
istruzioni di montaggio serratura / lock assembly instructions



Visualizza il documento di foratura della porta

View the door drilling document

VERSIONE CIECA E CON CILINDRO YALE BLIND VERSION AND WITH YALE CYLINDER



viti consigliate per montaggio serratura:
3,5x16 mm
recommended screws for lock assembly:
3,5x16 mm



serratura vertical
vertical lock



cover frontale
front plate



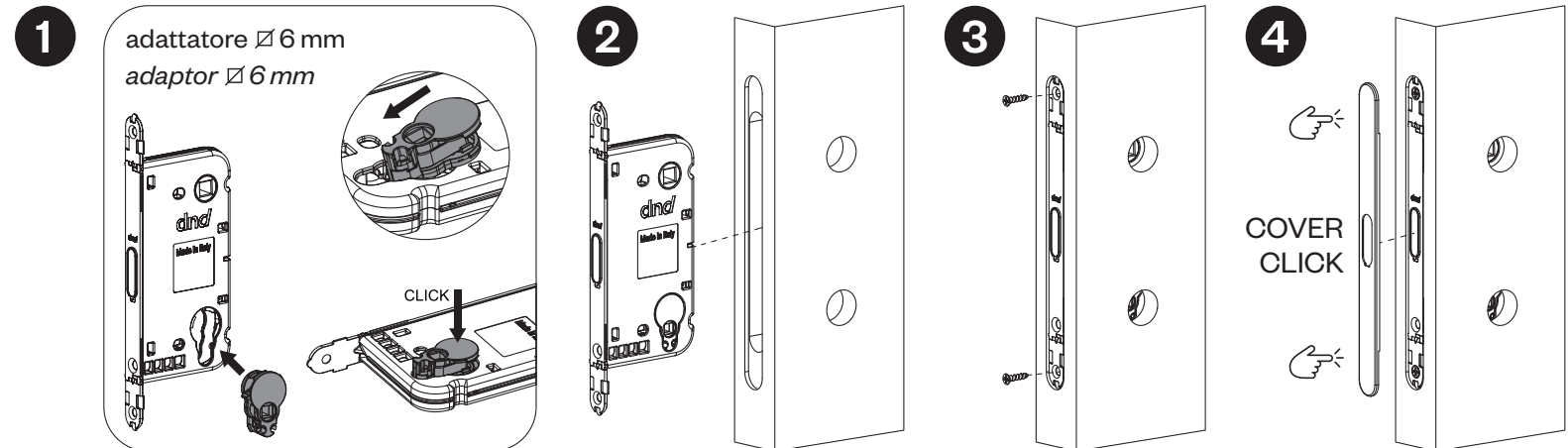
adattatore \varnothing 6 mm
adaptor \varnothing 6 mm

viti consigliate per montaggio maniglie
(rosette/placche/bocchette)

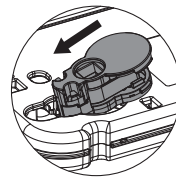
recommended screws for handles assembly
(roses/plates/escutcheons)

3,5x12 mm

VERSIONE NOTTOLINO \varnothing 6 mm \varnothing 6 mm TURN & RELEASE VERSION



adattatore \varnothing 6 mm
adaptor \varnothing 6 mm



vertical

istruzioni di montaggio incontri / *striking plate assembly instructions*

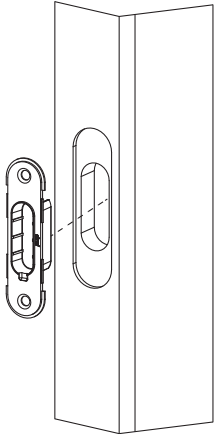


Visualizza il documento di foratura della porta

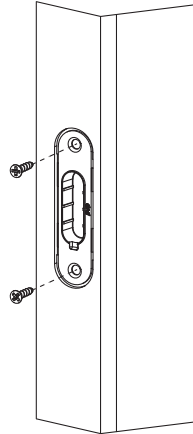
View the door drilling document

INCONTRO CON COVER *STRIKING PLATE WITH COVER*

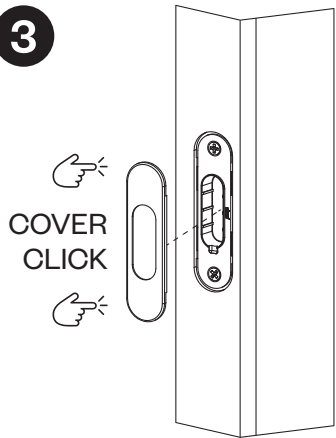
1



2



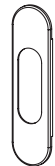
3



incontro
striking plate

RUOTARE DI 180°
PER REGOLAZIONE

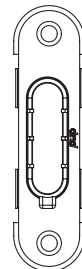
ROTATE 180°
TO ADJUST



cover incontro
striking plate cover

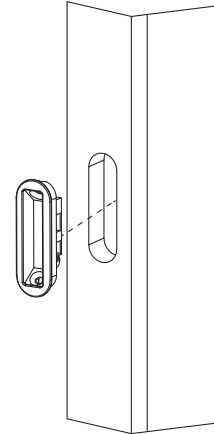


viti consigliate:
3,5x16 mm
recommended screws:
3,5x16 mm

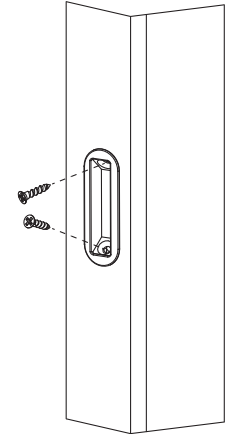


INCONTRO SENZA COVER *STRIKING PLATE WITHOUT COVER*

1



2



incontro
striking plate

RUOTARE DI 180°
PER REGOLAZIONE

ROTATE 180°
TO ADJUST



viti consigliate:
3,5x16 mm
recommended screws:
3,5x16 mm

